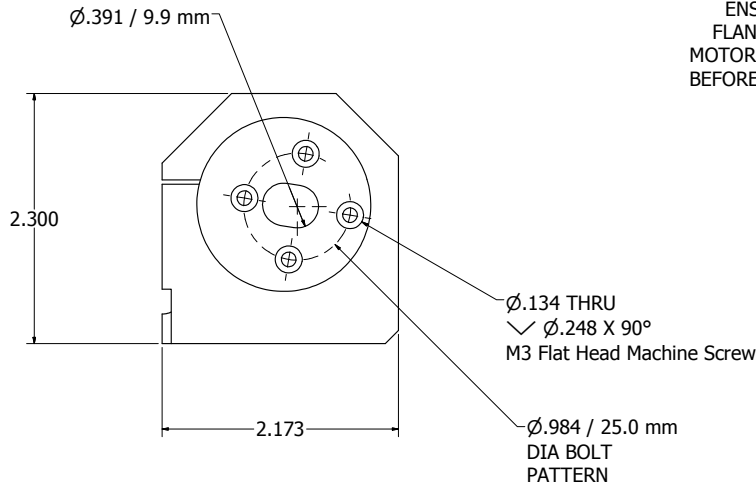
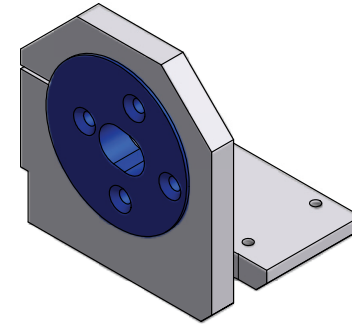


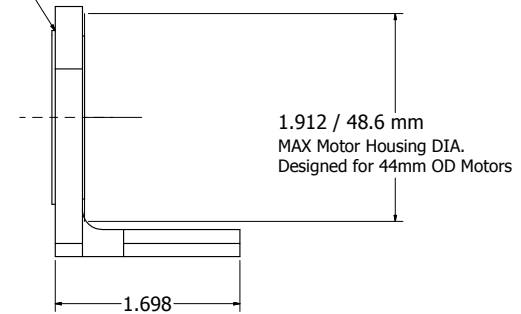
- NOTES:  
 1. MATERIAL:  
 2. REMOVE ALL BURRS AND SHARP EDGES UNLESS SPECIFIED.  
 3. MAXIMUM ROUGHNESS  $\sqrt{32}$  UNLESS SPECIFIED  
 4. END OF NOTES

5-40 UNC - 2B  
 USE YOUR STOCK MOTOR  
 MOUNT SCREWS (4EA)

5-40 UNC - 2B  $\sqrt{.300}$   
 5-40 SCREW SUPPLIED.  
 DO NOT OVERTIGHTEN SCREW.  
 IT DOES NOT TAKE MUCH TO LOCK  
 THE MOTOR IN PLACE.  
 NO LOCKTITE REQUIRED



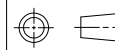
ENSURE THAT THE SWIVEL  
 FLANGE IS FLUSH WITH THE  
 MOTOR MOUNT UPRIGHT FACE  
 BEFORE TIGHTENING THE 5-40  
 LOCKING SCREW.



PRELIMINARY  
 FOR QUOTATION ONLY  
 DO NOT MANUFACTURE

This drawing and the information it contains are both property of TD-RACING INC. and are to be held by the recipient as confidential and are not to be transferred to any third party, used to make or furnish information for making any physical structure or any pictorial, graphic or verbal representation of any information contained herein or copied (unless supplied in productive form) without the express written consent of TD-RACING.

THIRD ANGLE PROJECTION



UNLESS OTHERWISE  
 SPECIFIED, DIMENSIONS ARE  
 IN INCHES. DO NOT SCALE  
 DRAWING

GENERAL TOLERANCES 1 PL DEC: $\pm 0.020$ 2 PL DEC: $\pm 0.010$ 3 PL DEC: $\pm 0.005$ ANGLES: $\pm 1^\circ$	PART MODEL FILENAME TD-2350.lam MODELED S KENNEY 2/7/2008 DETAILED The Dude 11/23/2008 CHECKED	<b>TD-RACING INC.</b>	REV
DESIGN STATE WorkInProgress	DESC MOTOR MOUNT ASSY, LST, BRUSHLESS		
		SHT 1 OF 2	

